

**PUD NO. 1 OF SKAGIT COUNTY
W1 WATER PUMP SYSTEM REPLACEMENT PROJECT**

ADDENDUM NO. 1

Date of Issue: April 4, 2025

To All Planholders and/or Prospective Bidders:

The time and place of bidding remains unchanged as 10:00 AM, Wednesday, April 9, 2025 at Public Utility District No. 1 of Skagit County. Note the bids will be received in the old building adjacent to Freeway Drive.

Acknowledge receipt of this Addendum in the space provided in the BID FORM. Failure to do so may subject the Bidder to disqualification.

The following changes, additions, and/or deletions are hereby made a part of the project bid documents for the **W1 Water Pump System Replacement Project** and shall have the same effect as if set forth therein.

SPECIFICATIONS

Bid Forms – Use the attached revised Bid Schedule which includes the following corrections.

Revise Procurement Forms and Supplements Page 00 040 00-3 Bid Schedule Item No. 8 unit price from \$208,230.00 to \$208,230.00.

Revise Procurement Forms and Supplements Page 00 040 00-4 Bid Schedule – Additive Alternate Item “No. 14 – Remove and Dispose of Existing Raw Water Pumps & Motors” to “No. A-1 – Remove and Dispose of Existing Raw Water Pumps & Motors”

Contract Forms

Revise Agreement Form Page 00 52 00 – 1 item 5 with the following:

5. In the event that the Contractor fails to substantially complete the Project by the date of substantial completion as specified above or as modified by Change Order, the Contractor shall be liable for liquidated damages of FIVE HUNDRED DOLLARS (\$500.00) per calendar day thereafter until the Owner determines the Project to be substantially complete.

See Liquidated Damages Attachment for details. Contractor awarded the contract shall sign form.

Delete any reference to Bid Item 13:

Specifications Group, Table of Contents, page iv, Division 18 Measure and Payment, Bid Item 13. Bid Item 13 is Additive Alternate 1.

PLANS

Sheet No. 2 of 13, DWG NO. M01

Add the following Note to the Additive Alternative No. 1 Detail:

THIS PICTURE SHOWS THE OLD RAW WATER PUMPS AND MOTORS (EAST SIDE OF BUILDING) THAT WILL BE REMOVED AND DISPOSED OF PROPERLY. THE OWNER WILL DECIDE IF THE COST IS WORTH REMOVAL BY ADDING THE ALTERNATIVE TO THE PROJECT AFTER BID RESULTS ARE KNOWN. SEE THE ASBUILTS PROVIDED BELOW WHICH PROVIDE DETAILS ON SPACE BETWEEN PUMPS AND CEILING AND ROOF HATCHES WHICH ALLOW FOR PUMP AND MOTOR REMOVAL BY CRANE.

Sheet No. 3 of 13, DWG NO. C02

Add the following note to the page:

ALL PHOTOS SHOWN ARE THE W1 PUMPS INCLUDING W1-1, W1-2 AND THE SURFACE WASH PUMPS AND MOTORS (WEST SIDE OF BUILDING). SEE THE ASBUILTS PROVIDED BELOW WHICH PROVIDE DETAILS ON SPACE BETWEEN PUMPS AND CEILING AND PUMP PAD AND CEILING.

Sheet No. 11 of 13, DWG NO. E05

Add the following note to the page:

THE PHOTO IN THE BOTTOM-RIGHT OF E05 IS OF AN OLD SB2. THE CURRENT SB2 IS SHOWN IN THE TOP LEFT PHOTO. SB2 IS A SQUARE D/SCHNEIDER PANEL AND THE CIRCUIT BREAKERS AND BLOCK OFF PLATES PROVIDED AND INSTALLED BY THE CONTRACTOR SHALL BE SUITABLE FOR THE SQUARE D/SCHNEIDER PANELBOARD.

QUESTIONS/RESPONSES

Question	Response
Is the pre-bid meeting listed in the specs mandatory or not?	The pre-bid meeting is not mandatory.
Can get an engineer's estimate?	Range is \$640,000-\$805,000. Range including alternate is \$650,000-\$815,000
Would you mind pointing me in the right direction on where to find liquidated damages in the specs?	The liquidated damages amount is \$500 per calendar day. Item 5 of the contract as shown on page 00 52 00 -1 of the Agreement
Does the estimated engineer's range include the allowance for the controls?	Bid Item #8 Control System by QCC in the amount of \$ 208,230.00 is included in the engineer's estimated ranges.
Was it your intention to show on the bid schedule line item 8 "Control System by QCC" unit price at \$208.230.00?	Bid Item #8 Control System by QCC, unit price, should read \$208,230.00 (Two Hundred Eight Thousand, Two Hundred Thirty Dollars).

Insurance is Per WSDOT Spec. Can you advise if OCP will be a requirement?	Yes, according to WSDOT specifications.
For blind flange placement over the Raw Water Pumps to be removed, what is the grating rated load capacity?	Grating is rated for pedestrian loads only. Blind flanges can fit through roof hatches and set over the pumps after pump removal.
Can signal conduits be grouped?	Grouping of circuits C1, C2, C3 is permissible. Contractor shall provide junction boxes as necessary.
Are system shutdowns required?	See Dwg No. M01 General Notes regarding system shutdowns for the W1 pump system. For the additive alternate, an isolation valve separates the suction and discharge of the Raw Water Pumps to be removed. The PUD will provide all 46" diameter blind flanges and gaskets for sealing the pump cans. The PUD will provide all 20", 12" and 16" blind flanges and gaskets for sealing the discharge piping at the pipe spool connection adjacent the check valve and opposite of the butterfly valves. Remove and dispose of properly the pump, bowls, column, motors, piping, fittings and check valves. Remove and dispose of properly the Motor Control Centers and wire for the Raw Water Pumps as part of the base bid item 9, Control Systems Coordination.

This Addendum consists of three pages of specification and plan updates, two pages revised bid forms, four pages of pre bid meeting minutes, and four pages of as-built records, for a total Addendum of **thirteen (13) pages**.



Mark C. Handzlik, P.E., Engineering Manager
 PUD No.1 of Skagit County
 Signed: April 4, 2025



Dan Burwell, P.E., Project Manager
 RH2 Engineering, Inc.
 Signed: April 4, 2025

W1 PUMP SYSTEM REPLACEMENT PROJECT

BID SCHEDULE

No.	Bid Schedule Description	Estimated Quantity	Unit Price	Total
1.	Mobilization, Demobilization, Site Preparation, and Cleanup	1 LS	\$	\$
2.	Contractor Health and Safety Plan, Site-Specific Safety Plan, and Spill Prevention Control and Countermeasure (SPCC) Plan	1 LS	\$	\$
3.	Pump Station Mechanical	1 LS	\$	\$
4.	Magnetic Flow Meter Installation	1 LS		
5.	Pumps and Motors	1 LS	\$	\$
6.	Pressure Tanks and Mechanical	1 LS	\$	\$
7.	Pump Station Electrical	1 LS	\$	\$
8.	Control System by QCC	1 LS	\$ 208,230.00	\$ 208,230.00
9.	Control System Coordination	1 LS	\$	\$
10.	Testing, Startup, and Training and Commissioning	1 LS	\$	\$
11.	Operation and Maintenance Manuals	1 LS	\$	\$
12.	Construction Records	1 LS	\$	\$

Sub-Total Base Bid \$ _____

Sales Tax (8.6%) \$ _____

**Total Bid Amount including
Sales Tax** \$ _____

DOLLARS

Total Bid Amount (written in words)

ADDITIVE ALTERNATE

No.	Bid Schedule Description	Estimated Quantity	Unit Price	Total
A-1	Remove and Dispose of Existing Raw Water Pumps and Motors	1 LS	\$	\$

Sub-Total Base Bid Including Additive Alternate \$ _____

Sales Tax (8.6%) \$ _____

Total Bid Amount Including Additive Alternate & Sales Tax \$ _____

DOLLARS

Total Bid Amount (written in words)



**W1 Pump System Replacement
Pre-Bid Meeting Agenda
April 1, 2025
1:30 PM**

Project Manager Mike Benton welcomed everyone and called the pre-bid meeting to order at 1:31 PM.

Project Manager Benton introduced some of the attendees including District staff, RH2 Engineering and Quality Controls Corporation. Attendance sign-in sheet attached.

Project Manager Benton stated that the purpose of the pre-bid was to briefly go over the project elements, discuss and highlight the unique parts of the project, provide an opportunity for Bidder's questions and provide an opportunity to tour the project site.

Project description/overview: Installation of a new pump system at the Judy Reservoir Water Treatment Plant to replace the existing W1 pump system. The new pump system will include three pumps, motors, motor control centers, VFD control systems, flow meter, bladder pressure tanks, mechanical appurtenances and modifications, and electrical equipment. Portions of the existing W1 pump system will need to be maintained during the installation of the new pump system to achieve continuity of service throughout the project.

Project Manager Benton reviewed the bid schedule:

Question Cutoff: Friday, April 4, 2025, at 8:00 AM

Bids Due: Wednesday, April 9, 2025, by 10:00 AM

Drop off bids in sealed envelopes at the existing District Administrative Building at 1415 Freeway Drive, Mount Vernon, WA 98273 (not the newly constructed building).

Open Bids: Wednesday April 9, 2025, no sooner than 10:01 AM

Anticipated Completion of Construction: April 2026

Project Manager Benton discussed project constraints including 365 calendar days, electrical permit to be procured by the Contractor. Use only the Bid Proposal form or Addendum Bid Proposal form to submit bids. All pages of the form must be submitted with the bid unless specific addenda pages are issued. New Bid Schedule will be issued via Addendum.

Project Manager Benton stated that the typical cut off for monthly Progress payments is on the 25th of the month. There is a 5% retainage required.

Project Manager Benton stated that Addendum No. 1 will be issued with questions/clarifications to date.

Project Manager Benton opened the meeting up to Questions/Clarifications:

Project Manager Benton stated that the pumps will be removed in the following order: pump 2, pump 1 and pump 3.

Dan Burwell, RH2 stated that pneumatic pressure tanks are added to replace the existing, and the pump station's pressure relief valve is being replaced. For Additive Alternate 1, there are roof

hatches to access the five old Raw Water pumps with a crane. The addendum will provide as-builts showing vertical clearance from W pumps to ceiling and Raw Water pumps and roof hatches.

Capital Program Manager Mark Semrau stated that there is a shut-down required for the entire Water Treatment Plant facility and roughly 50 customers, to swap pumps. This work must be done after October 1, 2025. See contract document plans sheet 3/13, general notes, 7-hour maximum shut-down.

Q: There are three ¾” conduits to the telemetry plan, one for each pump. Can one conduit be run to house all three cables?

A: RH2 will address via Addendum.

Q: Explain the work for the Additive Alternate?

A: All five raw water pumps are to be pulled. The District will provide the five pump can blind flanges along with the five smaller blind flanges, including flange gaskets and hardware which will be installed by the Contractor. The lump sum price shall cover the complete cost of removing, capping, and Contractor disposing of the existing five raw water pumps, motors, and discharge pipe as shown on the Plans.

Q: Will the motor control centers be pulled also?

A: RH2 will clarify via Addendum.

Q: Are abandoned raw water pump cans to be filled with concrete?

A: No.

With no further business to discuss the pre-bid meeting was adjourned at 2:10 PM.

Respectfully Submitted,
Catherine Price, Contract Coordinator



W1 Pump System Replacement
 Pre-Bid Meeting
 April 1, 2025
 1:30 PM

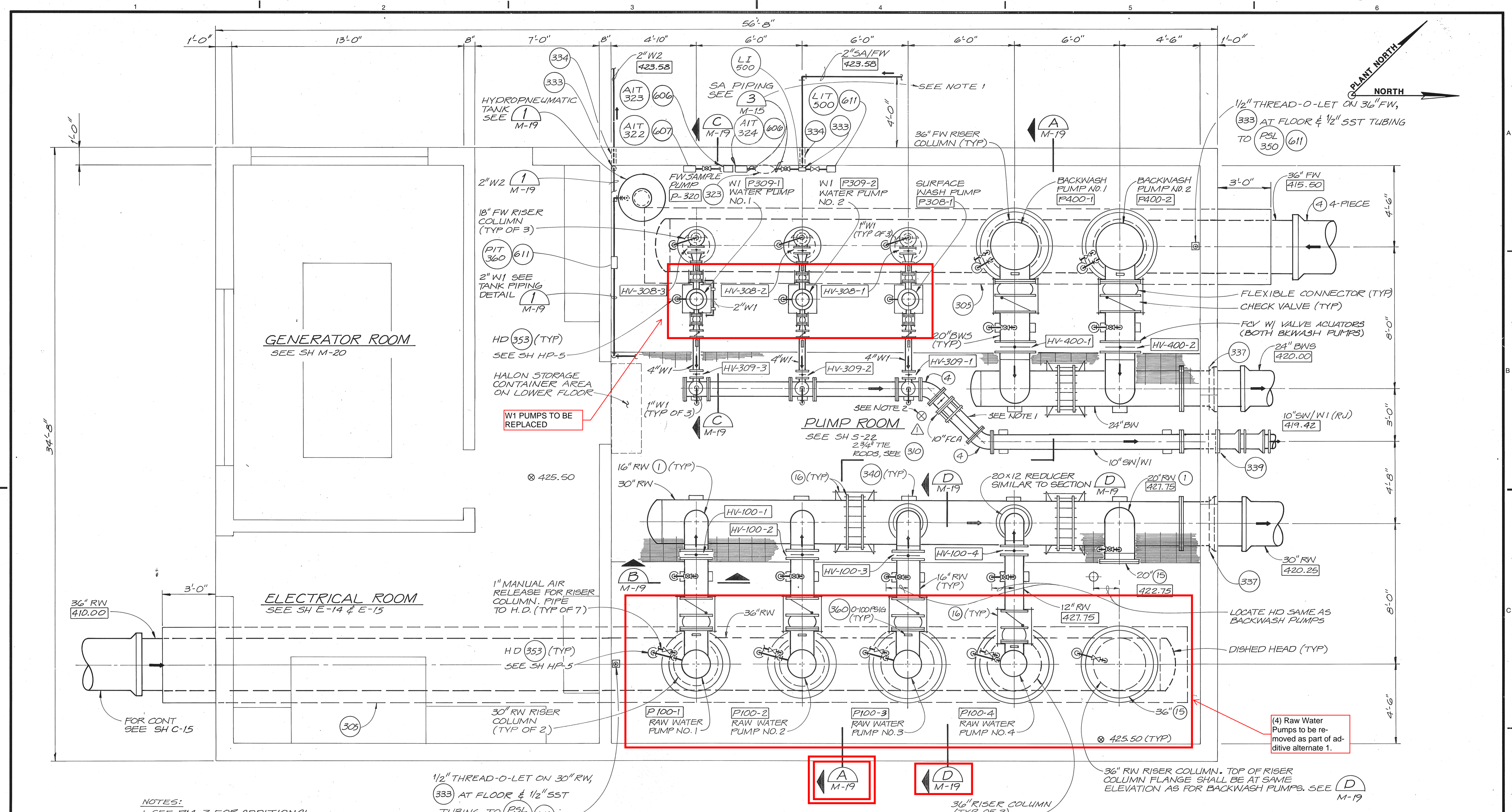
PRINT NAME	COMPANY	PHONE	E-MAIL
Pathome Price	PUD	360-424-7104	Price@SkagitPUD.org
Mike Benton	"		Benton@ " "
Kurt VanBurkleo	"		VanBurkleo@ " "
Michelle Peters	"		Peters@ " "
Paul Mason MOP	Summit Const Group	360-594-7815	Mason@Seesummit.com
Sim Muder	Summit Const	360-224-1999	Sim@Seesummit.com
DAN BURWELL	RHZ	360 684-1548	dburwell@rh2.com
Dave Ehenal	Summit	360-319-0898	dave@Ehenal.com
GALE FENSLEY	ICI	360-757-7574	bids@interwest.biz
MARK SEMRAN	PUD		
Ty Hershaw	Harris PNW	360-305-8888	THershaw@hmc.com
DAVID LIU	QIC	425-778-9280	David@quality-works.com
CAROLYN SMITH	MSI	425-316-6999	BIDS@MCCLUREANDSONS.COM



W1 Pump System Replacement
 Pre-Bid Meeting
 April 1, 2025
 1:30 PM

PRINT NAME	COMPANY	PHONE	E-MAIL
KIRC W. HACE	STRIDER CONST.	360-303-7123	kirc@striderconstruction.com
Meilly Russell	TRICO companies LLC	360 855 8674	bids@tricompanies.com
Evan Ackermann	Ackermann Electric Co.	360-336-6188	ackereco@gmail.com
Ryan Ackermann	"	"	rackermann84@gmail.com
Kirk Jackson	Pump Tech	425 301 9800	Kjackson@pumptechnw.com
SAM KLOES	WRS	360-410-8191	Sam@WRSWEB.com

CHECKED BY: _____
 DRAWN BY: _____
 DESIGNED BY: _____
 PRINTED: _____
 FILE NO: _____
 DC: _____
 FORMAT: _____



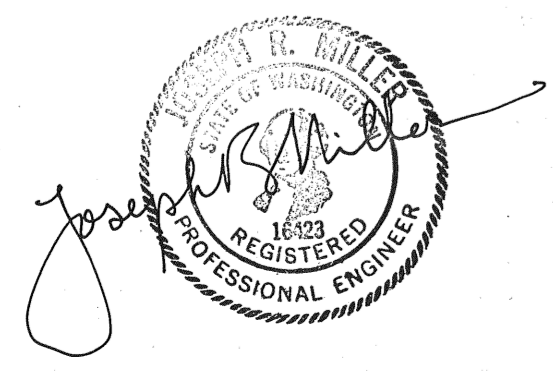
NOTES:
 1. SEE PM-3 FOR ADDITIONAL INFORMATION.

1/2" THREAD-O-LET ON 30" RW,
 333 AT FLOOR & 1/2" SST
 TUBING TO PSL 101 611

RECORD DRAWINGS PLAN
 Revisions Drawn by CMB Date 8/90

THESE RECORD DRAWINGS HAVE BEEN PREPARED, IN PART, ON THE BASIS OF INFORMATION COMPILED BY OTHERS. THEY ARE NOT INTENDED TO REPRESENT IN DETAIL THE EXACT LOCATION, TYPE OF COMPONENT NOR MANNER OF CONSTRUCTION. THE ENGINEER WILL NOT BE RESPONSIBLE FOR ANY ERRORS OR OMISSIONS WHICH HAVE BEEN INCORPORATED INTO THE RECORD DRAWINGS.

NOTES: 1. CUT END OFF EXISTING, 10" FLANGED SPOOL AND REUSE FLANGE X PLAIN AND PIPE.
 2. BUTTERFLY VALVE SHALL BE CLASS 150, FLANGED, W/ HAND WHEEL OPERATOR.



DSGN	J.R. MILLER	DR	R.E. Freier	CHK	S. TRUSLER	APVD	N. WARD
NO.	8/90	DATE	REVISION	BY	APVD		
	5/2/90	CHANGE ORDER 46 A					

CMB	PM
BY	APVD

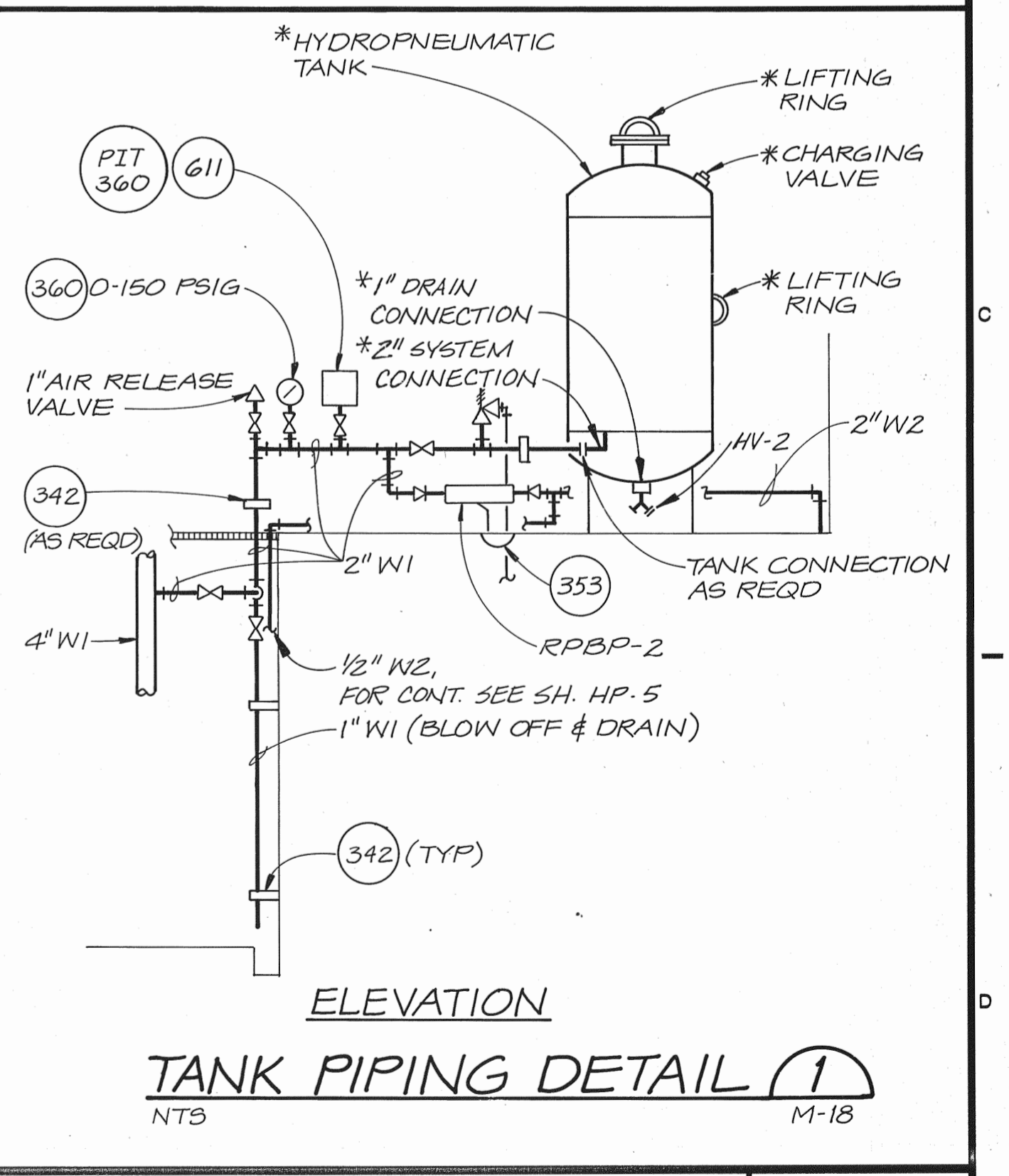
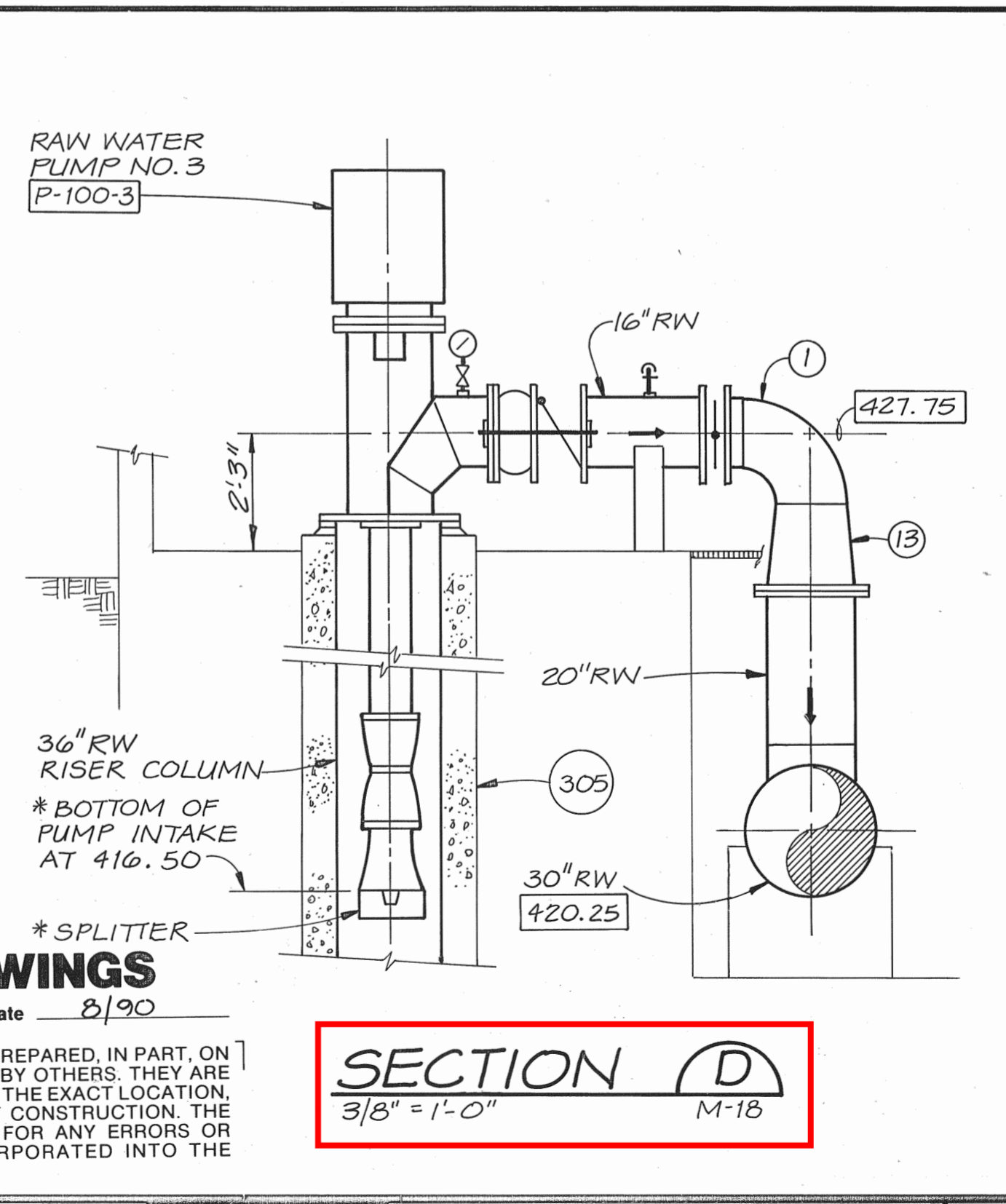
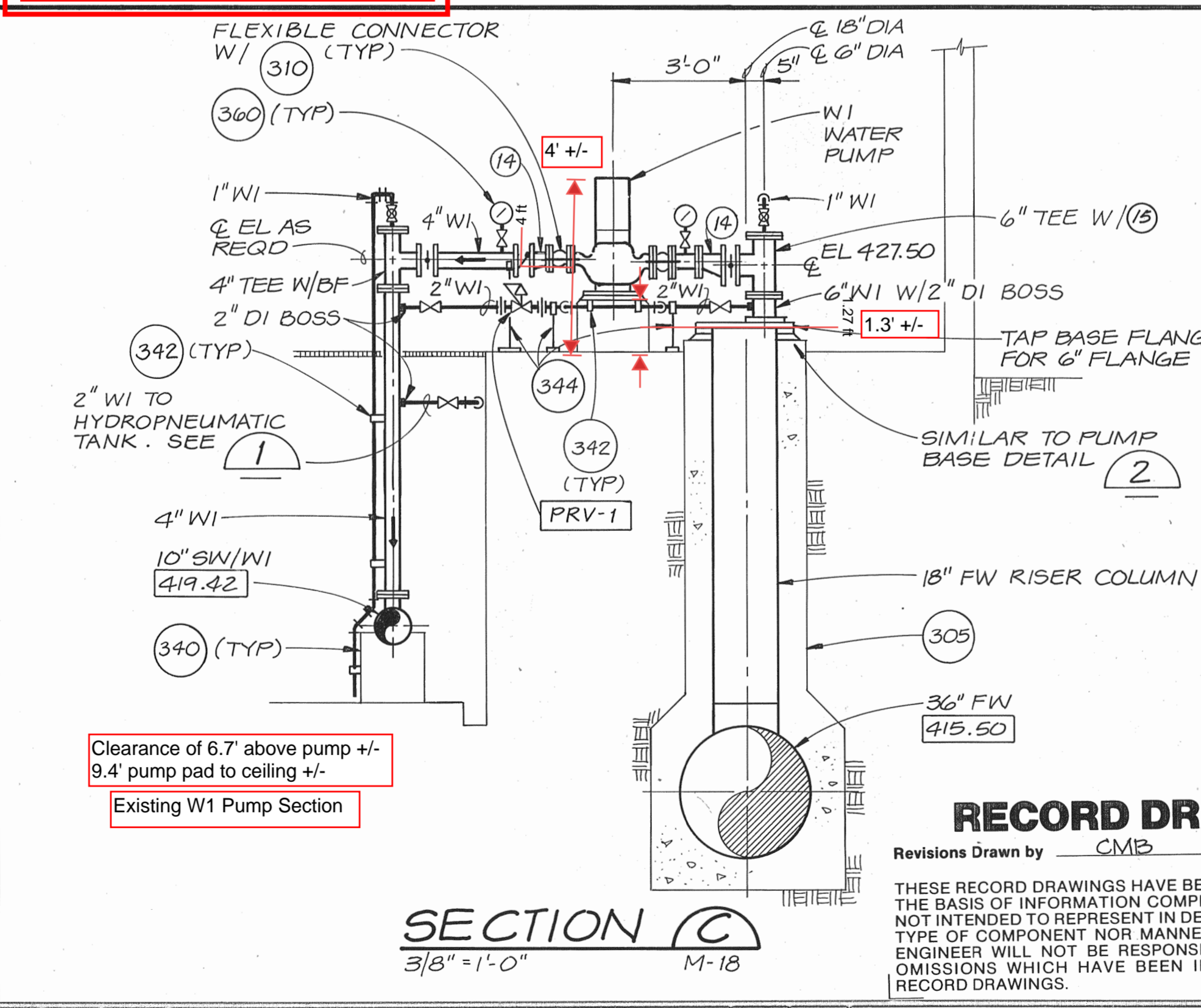
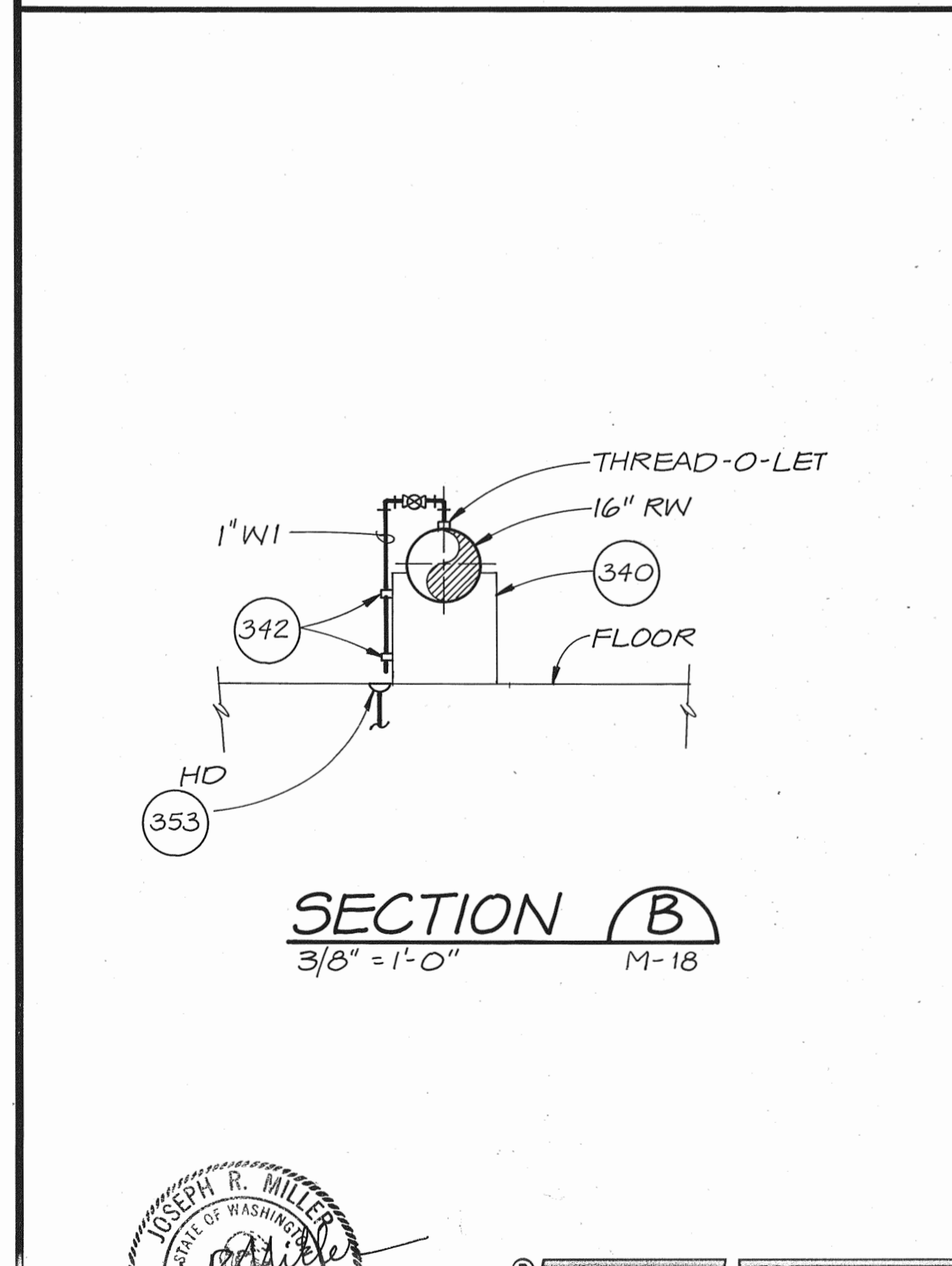
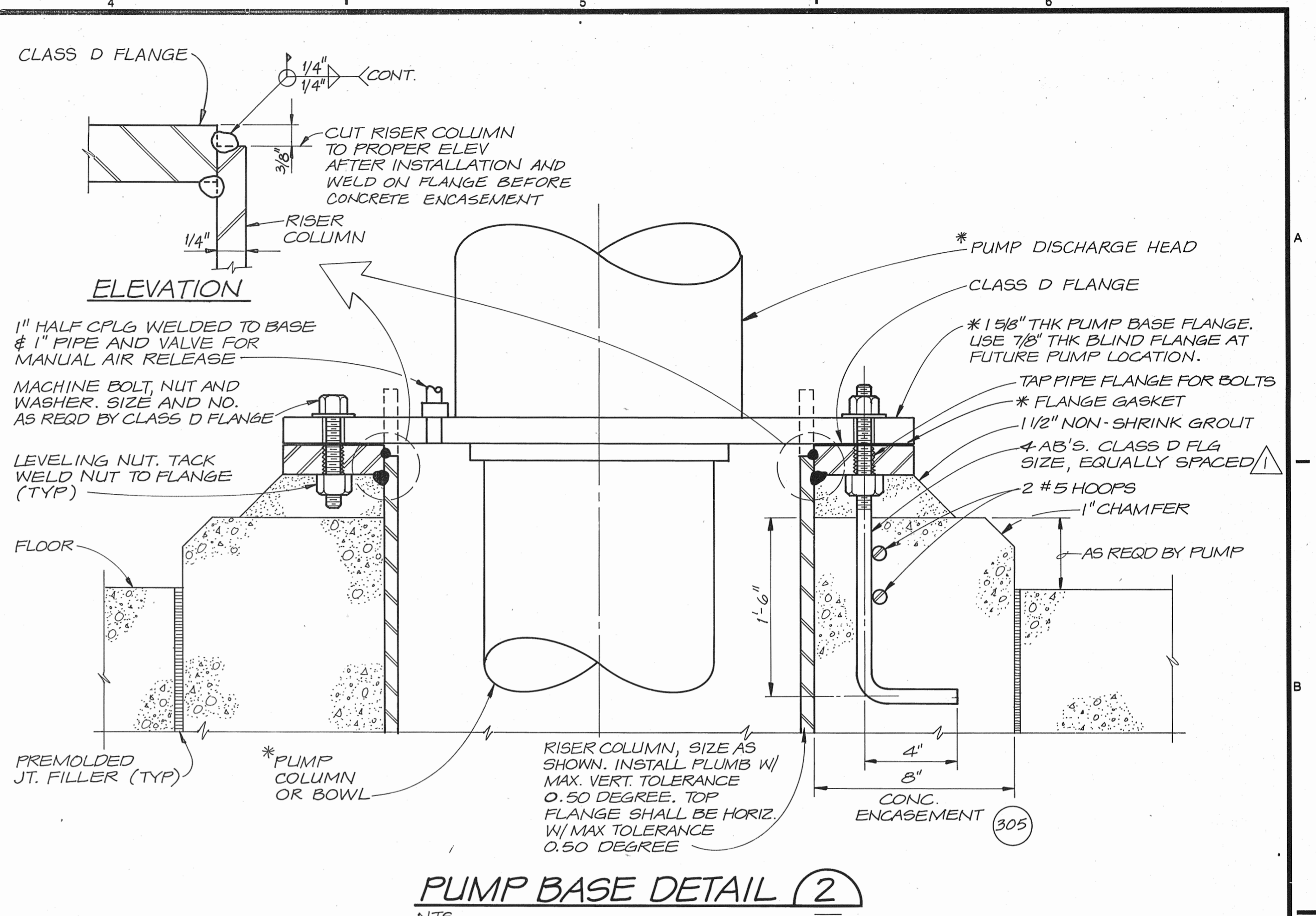
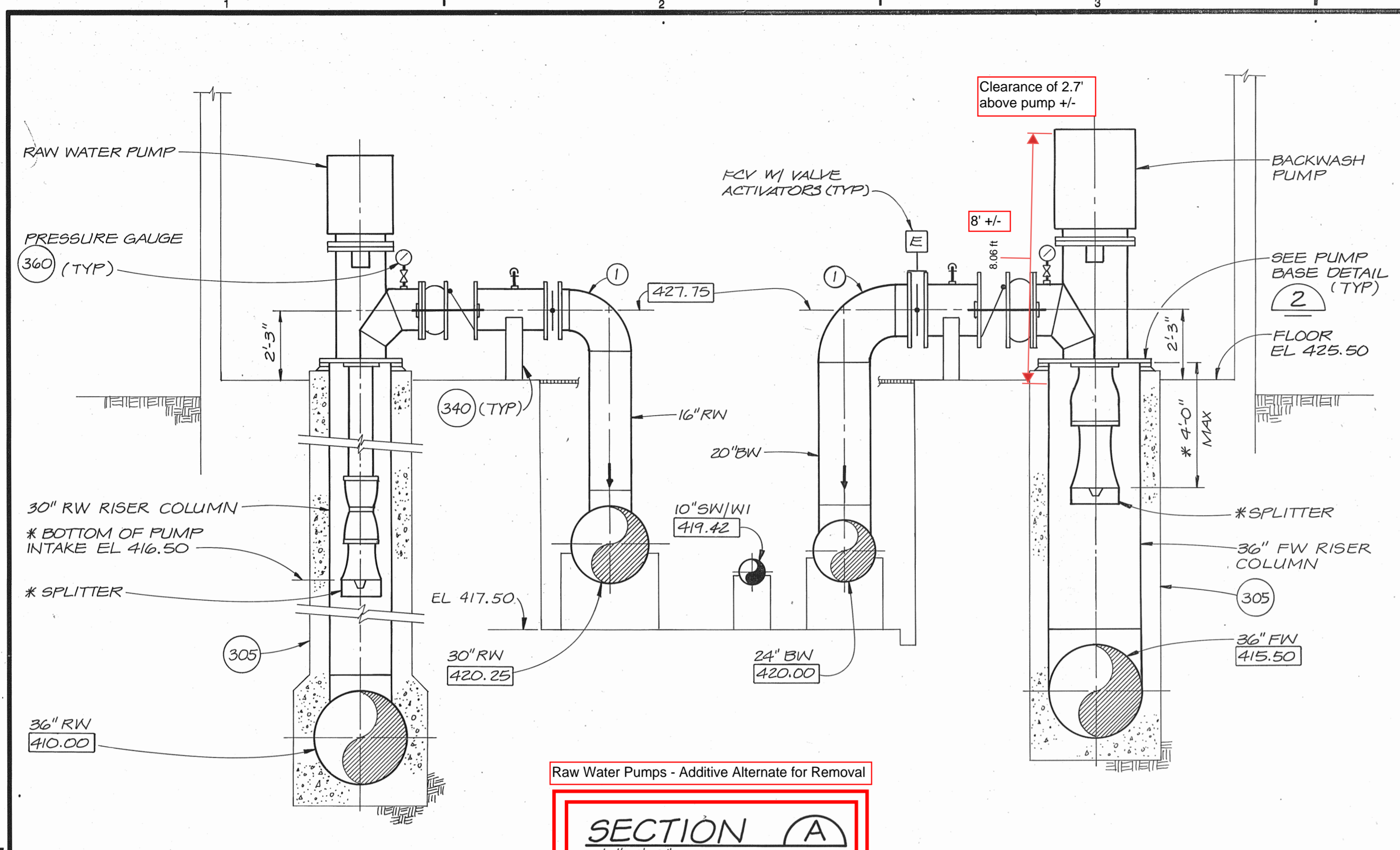
REUSE OF DOCUMENTS
 THIS DOCUMENT, AND THE IDEAS AND DESIGNS INCORPORATED HEREIN, AS AN INSTRUMENT OF PROFESSIONAL SERVICE, IS THE PROPERTY OF CH2M HILL AND IS NOT TO BE USED, IN WHOLE OR IN PART, FOR ANY OTHER PROJECT WITHOUT THE WRITTEN AUTHORIZATION OF CH2M HILL.

VERIFY SCALES
 BAR IS ONE INCH ON ORIGINAL DRAWING.
 IF NOT ONE INCH ON THIS SHEET, ADJUST SCALES ACCORDINGLY.

SKAGIT COUNTY P.U.D.
SKAGIT WATER TREATMENT PLANT

SHEET	M-18
DWG NO.	85
DATE	JAN. 1988
PROJ NO.	S21482.A1

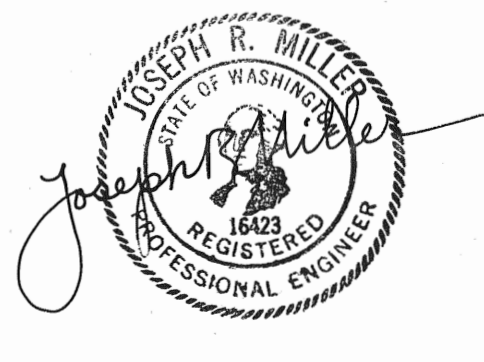
CHECKED BY
 DRAWN BY
 DESIGNED BY
 87
 9
 PRINTED
 22348C
 FILM KE
 22348C
 FORMAT



RECORD DRAWINGS
 Revisions Drawn by CMB Date 8/90
 THESE RECORD DRAWINGS HAVE BEEN PREPARED, IN PART, ON THE BASIS OF INFORMATION COMPILED BY OTHERS. THEY ARE NOT INTENDED TO REPRESENT IN DETAIL THE EXACT LOCATION, TYPE OF COMPONENT NOR MANNER OF CONSTRUCTION. THE ENGINEER WILL NOT BE RESPONSIBLE FOR ANY ERRORS OR OMISSIONS WHICH HAVE BEEN INCORPORATED INTO THE RECORD DRAWINGS.

REUSE OF DOCUMENTS
 THIS DOCUMENT, AND THE IDEAS AND DESIGNS INCORPORATED HEREIN, AS AN INSTRUMENT OF PROFESSIONAL SERVICE, IS THE PROPERTY OF CH2M HILL AND IS NOT TO BE USED, IN WHOLE OR IN PART, FOR ANY OTHER PROJECT WITHOUT THE WRITTEN AUTHORIZATION OF CH2M HILL.

VERIFY SCALES
 BAR IS ONE INCH ON ORIGINAL DRAWING.
 IF NOT ONE INCH ON THIS SHEET, ADJUST SCALES ACCORDINGLY.



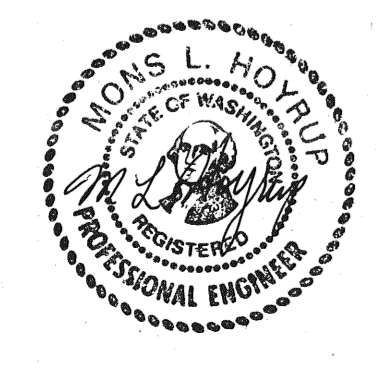
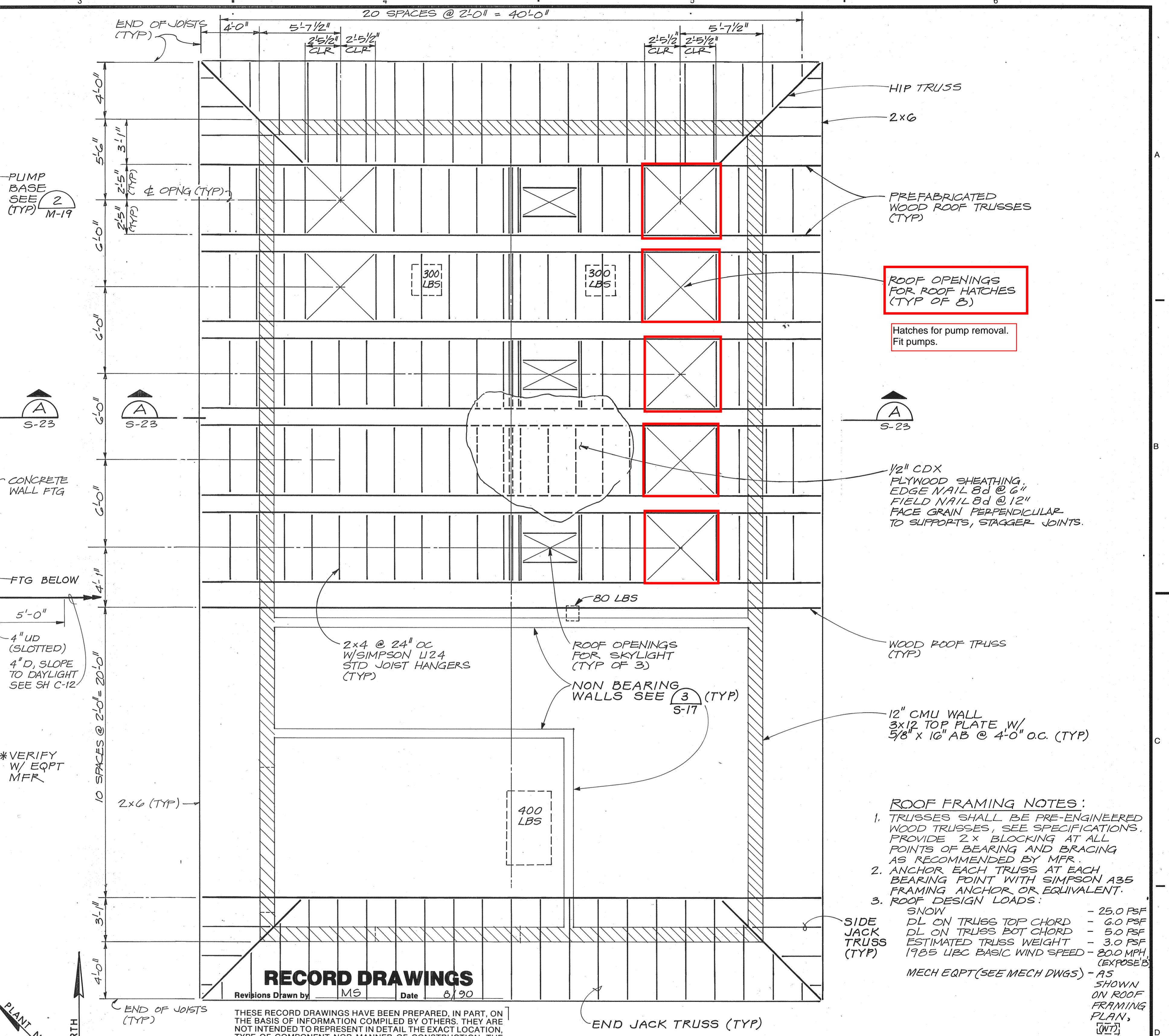
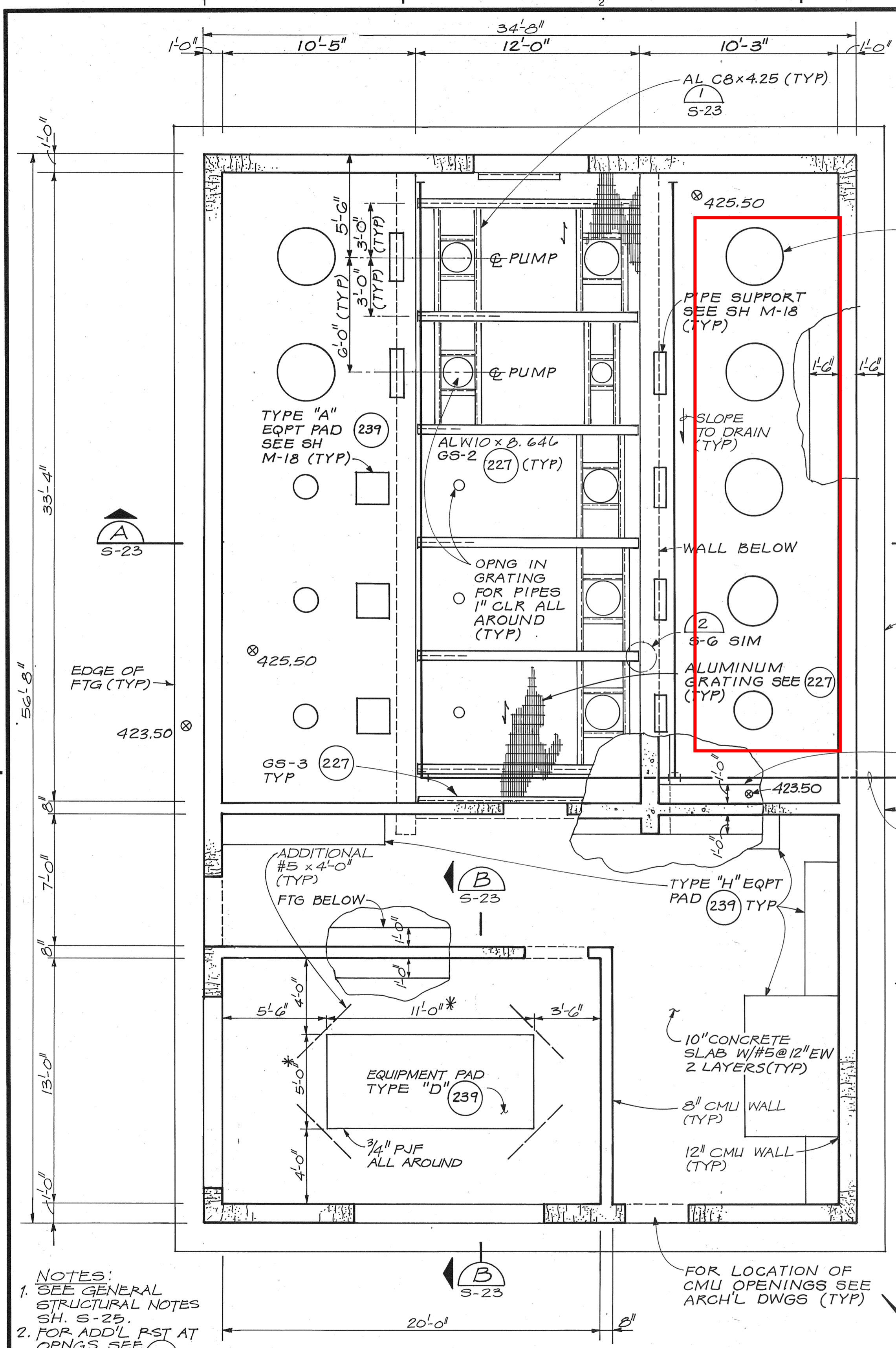
DSGN	J. R. MILLER	8/90	RECORD DRAWING	CMB	PM
DR	R.E. Trisler				
CHK	S. TRISLER	10-27-88	CHANGE ORDER 15A		
APVD	N. WARD			BY	APVD
NO.		DATE	REVISION		

SKAGIT COUNTY P.U.D.
 SKAGIT WATER TREATMENT PLANT

PUMP STATION — SECTIONS AND DETAILS

SHEET	M-19
DWG NO.	86
DATE	JAN. 1988
PROJ NO.	S21482.A1

DESIGNED BY: []
 DRAWN BY: []
 CHECKED BY: []
 84
 10
 PRINTED
 2234 DC
 FILM KE
 2234 DC
 FORMAT



DSGN	D. WERMCRANTZ				
DR	B. LAZARO				
CHK	M. HOYRUP	8/90	RECORD DRAWING	MS	PM
APVD	N. WARD	NO.	DATE	BY	APVD

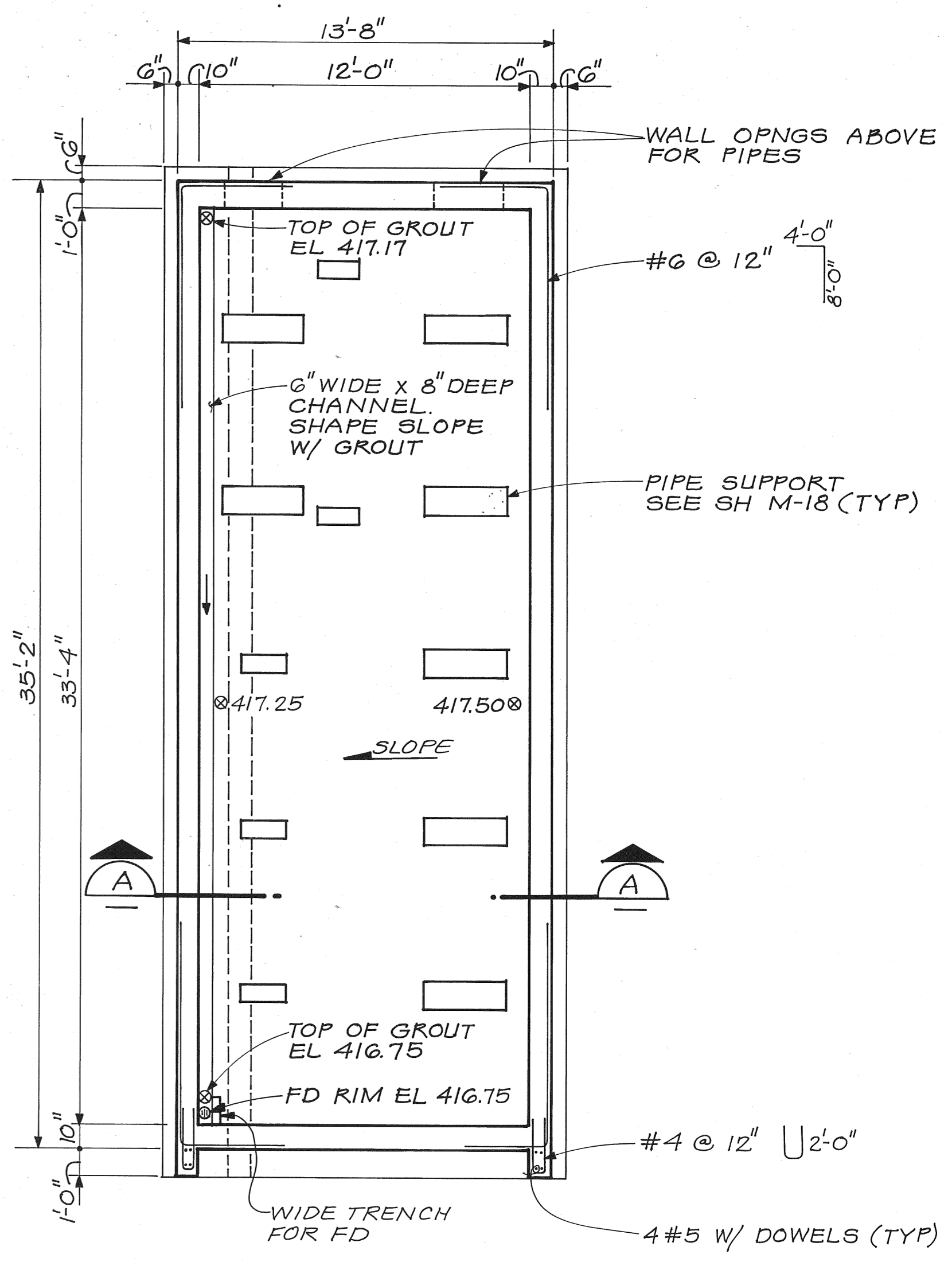
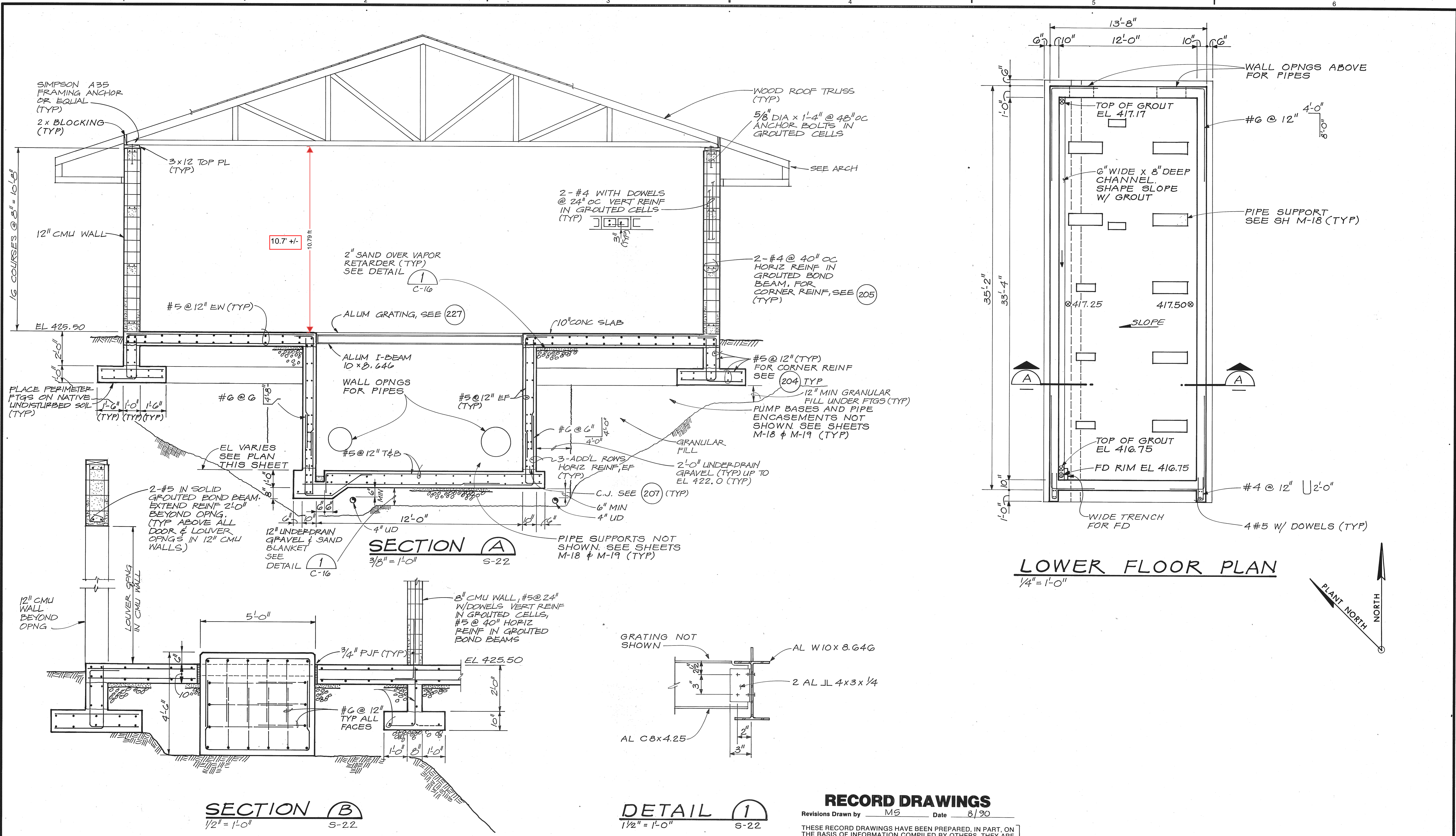
REUSE OF DOCUMENTS
 THIS DOCUMENT, AND THE IDEAS AND DESIGNS INCORPORATED HEREIN, AS AN INSTRUMENT OF PROFESSIONAL SERVICE, IS THE PROPERTY OF CH2M HILL AND IS NOT TO BE USED, IN WHOLE OR IN PART, FOR ANY OTHER PROJECT WITHOUT THE WRITTEN AUTHORIZATION OF CH2M HILL.

VERIFY SCALES
 BAR IS ONE INCH ON ORIGINAL DRAWING.
 IF NOT ONE INCH ON THIS SHEET, ADJUST SCALES ACCORDINGLY.

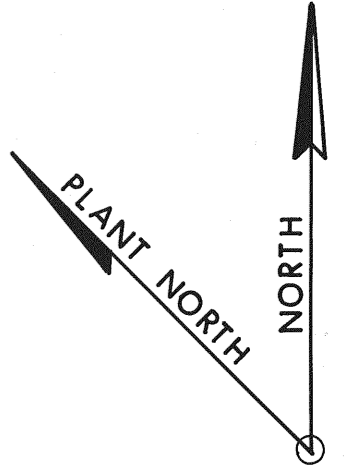
SKAGIT COUNTY P.U.D.
 SKAGIT WATER TREATMENT PLANT

PUMP STATION — UPPER FLOOR PLANS & ROOF PLAN		SHEET	S-22
DWG NO.	63	DATE	JAN. 1988
PROJ NO.	S21482.A1		

CHECKED BY: _____
 DRAWN BY: _____
 DESIGNED BY: _____
 64
 PRINTED
 10
 FILM KE
 2234 DC
 FORMAT



LOWER FLOOR PLAN
1/4" = 1'-0"



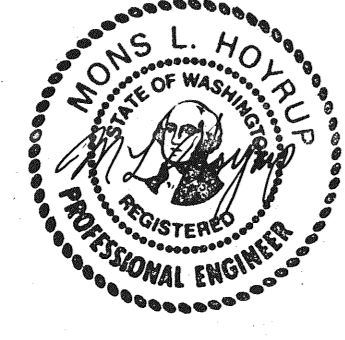
SECTION B
1/2" = 1'-0" S-22

DETAIL 1
1/2" = 1'-0" S-22

RECORD DRAWINGS

Revisions Drawn by MS Date 8/90

THESE RECORD DRAWINGS HAVE BEEN PREPARED, IN PART, ON THE BASIS OF INFORMATION COMPILED BY OTHERS. THEY ARE NOT INTENDED TO REPRESENT IN DETAIL THE EXACT LOCATION, TYPE OF COMPONENT NOR MANNER OF CONSTRUCTION. THE ENGINEER WILL NOT BE RESPONSIBLE FOR ANY ERRORS OR OMISSIONS WHICH HAVE BEEN INCORPORATED INTO THE RECORD DRAWINGS.



DSGN	D. WERMCRANTZ				
DR	B. LAZARO				
CHK	M. HOYRUP	8/90	RECORD DRAWING	MS	PM
APVD	N. WARD	NO.	DATE	REVISION	BY
					APVD
					MS
					PM
					CH2M HILL

REUSE OF DOCUMENTS
THIS DOCUMENT, AND THE IDEAS AND DESIGNS INCORPORATED HEREIN, AS AN INSTRUMENT OF PROFESSIONAL SERVICE, IS THE PROPERTY OF CH2M HILL AND IS NOT TO BE USED, IN WHOLE OR IN PART, FOR ANY OTHER PROJECT WITHOUT THE WRITTEN AUTHORIZATION OF CH2M HILL.

VERIFY SCALES
BAR IS ONE INCH ON ORIGINAL DRAWING.
IF NOT ONE INCH ON THIS SHEET, ADJUST SCALES ACCORDINGLY.

SKAGIT COUNTY P.U.D.
SKAGIT WATER TREATMENT PLANT

**PUMP STATION — LOWER FLOOR PLAN,
SECTION & DETAIL**

SHEET	S-23
DWG NO.	64
DATE	JAN. 1988
PROJ. NO.	S21482.A1