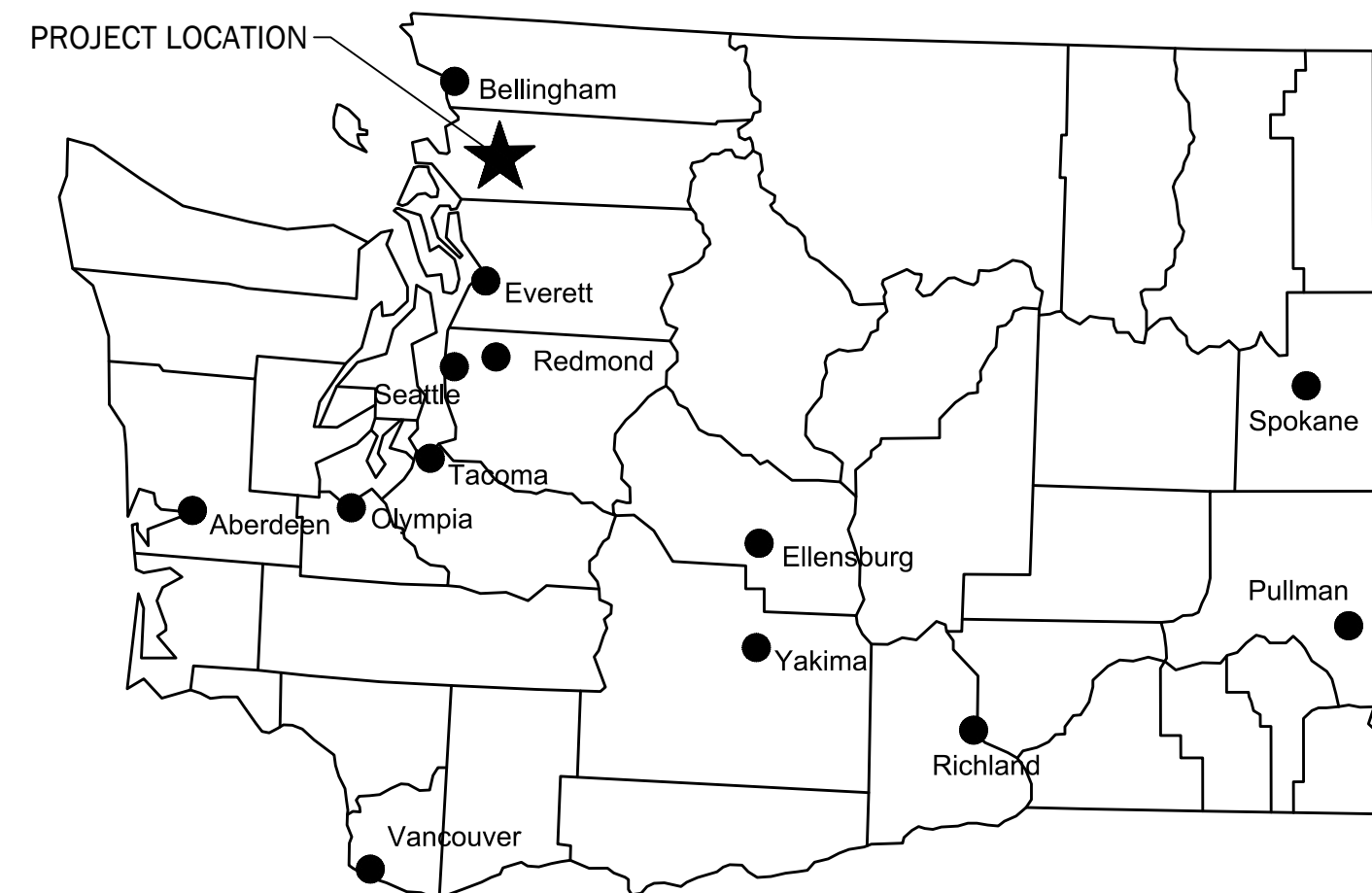


PIPELINE RELOCATION AT HENSON ROAD

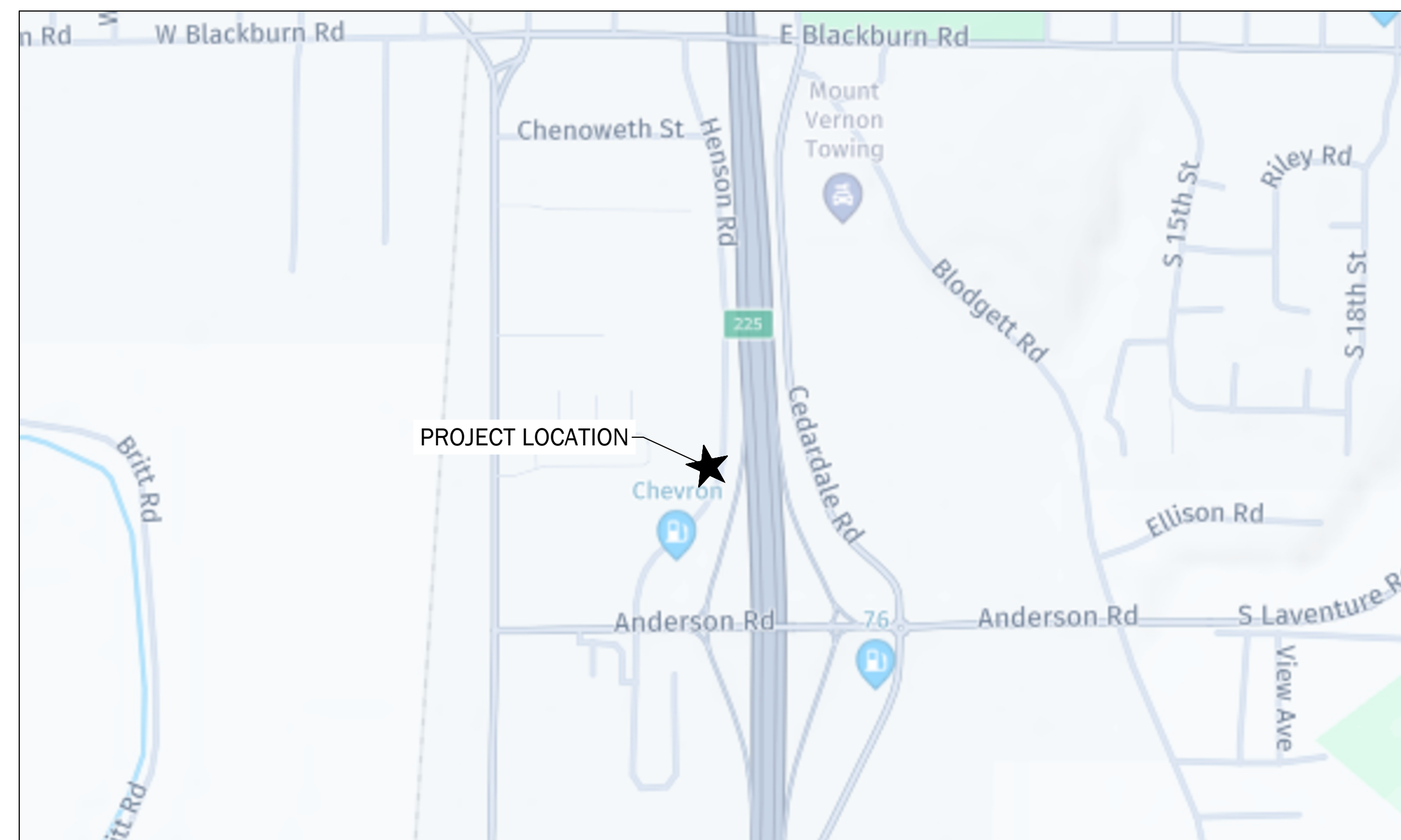
MOUNT VERNON, WASHINGTON



8/27/2025



VICINITY MAP
NTS



PROJECT LOCATION
Scale: 1" = 500'

SKAGIT COUNTY, WASHINGTON
CP14018
ISSUED FOR BIDDING
SEPTEMBER 9, 2025

DISTRICT NO. 1 OF SKAGIT COUNTY

DISTRICT OFFICIALS

ANDREW MILLER	PRESIDENT
CORRIN HAMBURG	VICE PRESIDENT
JOE LINDQUIST	SECRETARY
GEORGE SIDHU, P.E.	GENERAL MANAGER
MARK C. HANDZLIK, P.E.	ENGINEERING MANAGER
MICHAEL FOX	OPERATIONS MANAGER

DRAWING INDEX

SHEET	DESCRIPTION	SHEET NO.
G-1	COVER SHEET AND GENERAL INFORMATION	1 OF 6
G-2	GENERAL NOTES AND ABBREVIATIONS	2 OF 6
C-1	SITE PREPARATION, TESC AND HORIZONTAL CONTROL PLAN	3 OF 6
C-2	TRENCHLESS PLAN AND PROFILE	4 OF 6
C-3	DETAILS 1	5 OF 6
C-4	DETAILS 2	6 OF 6

REV.	DATE	APP.	DESCRIPTION



COVER SHEET
SKAGIT COUNTY PUD
PIPELINE RELOCATION AT HENSON ROAD
SKAGIT COUNTY, WASHINGTON

SHEET
REFERENCE
NUMBER:
G-1

SHEET 1 OF 6



C:\p\proj\014449\Drawings\DCS\240002\revision\100_04_2025.dwg, Layout 01, 11, Date Saved: 8/27/2025 2:29:13 PM, User: erik.o.andersen

SIGN SPACING = X (1)		
RURAL ROADS & URBAN ARTERIALS	35 / 40 MPH	350' ±
RURAL ROADS & URBAN ARTERIALS	25 / 30 MPH	200' ± (2)
RESIDENTIAL & BUSINESS DISTRICTS		
URBAN STREETS	25 MPH OR LESS	100' ± (2)

(1) ALL SPACING MAY BE ADJUSTED TO ACCOMMODATE INTERCHANGE RAMP, AT-GRADE INTERSECTIONS AND DRIVEWAYS.
 (2) THIS SPACING MAY BE REDUCED IN URBAN AREAS TO FIT ROADWAY CONDITIONS.

LONGITUDINAL BUFFER SPACE = B					
SPEED (MPH)	20	25	30	35	40
LENGTH (feet)	115	155	200	250	305

CHANNELIZATION DEVICE SPACING (feet)			
MPH	TAPER	TANGENT	
50/70	40	80	
35/45	30	60	
25/30	20	40	

City of MOUNT VERNON RIGHT OF WAY PERMIT




This set of plans is approved for construction in accordance with the City of Mount Vernon's codes and policies. Approval of this set of plans does not imply or convey permission to construct any item unless accompanied by a signed and approved permit covering the work. Actual conformance of the design with applicable laws is the sole responsibility of the professional engineer whose name and stamp appear on this set of plans. Acquiring, complying with, and providing mitigation for all applicable Federal, State, County, and local laws, permits and mandates, is the responsibility of the Landowner, Engineer, and Contractors working on this project. The approval of this plan set shall not be construed as proof of compliance with applicable laws and permit requirements. The approval of this plan set will expire one-year from the date City staff signed this plan set.

Signed:  07/30/2025
 Alan Danforth, Engineering Manger



- NOTES:**
1. AVOID PLACING LANE CLOSURE TAPERS WITHIN OR IMMEDIATELY FOLLOWING HORIZONTAL & VERTICAL CURVES BY ADJUSTING LONGITUDINAL BUFFER SPACE.
 2. IF LONGITUDINAL BUFFER SPACE IS REDUCED FROM DISTANCES LISTED IN TABLE, UPGRADE PROTECTIVE VEHICLE TO A TRANSPORTABLE ATTENUATOR.
 3. 36" TRAFFIC CONES, 42" TALL CHANNELIZATION DEVICES, OR TRAFFIC SAFETY DRUMS OK.
 4. BICYCLISTS MAY BE COMBINED WITH ALTERNATING VEHICULAR TRAFFIC. BIKES TO CLEAR PRIOR TO FLAGGERS RELEASING ONCOMING TRAFFIC.
 5. ACCOMMODATE PEDESTRIANS VIA SHUTTLE THROUGH LANE CLOSURE, USING THE PAVED SHOULDER OPPOSITE THE WORK AREA, OR ANOTHER METHOD THE ENGINEER ACCEPTS.
 6. SEE STANDARD SPECIFICATIONS FOR ADDITIONAL REQUIREMENTS:
 1-07.8(1) HIGH-VISIBILITY APPAREL
 1-10.3(1)A FLAGGERS AND NIGHTTIME ILLUMINATION
 1-10.3(2)A TRAFFIC CONTROL PROCEDURES
 9-35.1 24-INCH STOP/SLOW PADDLE SIZE
 7. FOR PROJECT-SPECIFIC REQUIREMENTS, SEE SPECIAL PROVISIONS.
 8. SIGNS ARE BLACK ON ORANGE UNLESS OTHERWISE INDICATED.
 9. ACTUAL CENTERLINE PAVEMENT MARKINGS MAY VARY.
 10. PARCEL, CL AND ROW LINES ARE APPROXIMATE.

LEGEND:

-  TEMPORARY SIGN LOCATION
-  28" REFLECTIVE TRAFFIC CONE (SEE NOTE 3)
-  PROTECTIVE VEHICLE (SEE NOTE 2)



City of MOUNT VERNON **Received**
 DEVELOPMENT SERVICES 7/29/2025

ISSUE	REVISIONS	BY	DATE
1.	TRAFFIC CONTROL PLAN	JLB	6/6/24

811
 Know what's below.
 Call before you dig.

DATUM: HOR: NAD 83 VERT: NAVD 88	DSGN BY: JLB DWN BY: JLB APPVD BY: MCH
DATE PRINTED: 6/6/24	SEC: 29 TWP: 34 N RGE: 4 E

Skagit PUD
 PUBLIC UTILITY DISTRICT

PUBLIC UTILITY DISTRICT
 NO. 1 of SKAGIT COUNTY
 1415 Freeway Drive
 P.O BOX 1436
 Mount Vernon, WA 98273
 (360) 424-7104
 www.SkagitPud.org

PIPELINE RELOCATION
 AT HENSON ROAD
 TRAFFIC CONTROL
 SHOULDER CLOSURE

SCALE: NTS JOB ID : CP14018 SHEET: 1 OF 2

SIGN SPACING = X (1)

RURAL ROADS & URBAN ARTERIALS	35 / 40 MPH	350' ±
RURAL ROADS & URBAN ARTERIALS	25 / 30 MPH	200' ± (2)
RESIDENTIAL & BUSINESS DISTRICTS		
URBAN STREETS	25 MPH OR LESS	100' ± (2)

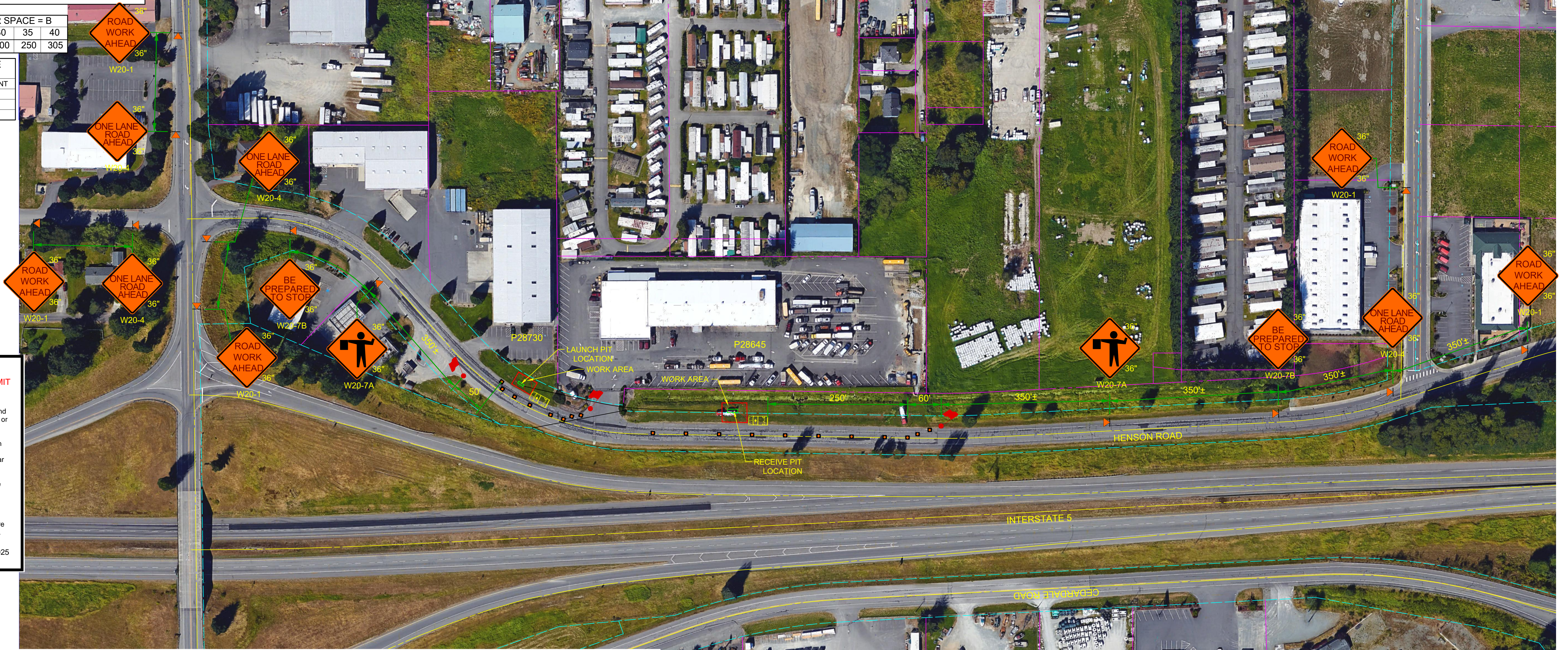
(1) ALL SPACING MAY BE ADJUSTED TO ACCOMMODATE INTERCHANGE RAMP, AT-GRADE INTERSECTIONS AND DRIVEWAYS.
 (2) THIS SPACING MAY BE REDUCED IN URBAN AREAS TO FIT ROADWAY CONDITIONS.

LONGITUDINAL BUFFER SPACE = B

SPEED (MPH)	20	25	30	35	40
LENGTH (feet)	115	155	200	250	305

CHANNELIZATION DEVICE SPACING (feet)

MPH	TAPER	TANGENT
50/70	40	80
35/45	30	60
25/30	20	40



City of MOUNT VERNON RIGHT OF WAY PERMIT

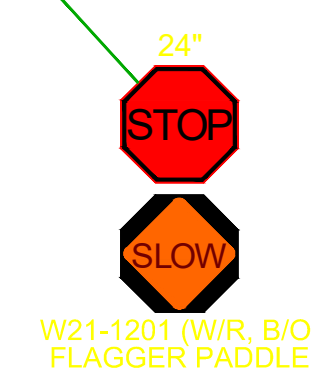
This set of plans is approved for construction in accordance with the City of Mount Vernon's codes and policies. Approval of this set of plans does not imply or convey permission to construct any item unless accompanied by a signed and approved permit covering the work. Actual conformance of the design with applicable laws is the sole responsibility of the professional engineer whose name and stamp appear on this set of plans. Acquiring, complying with, and providing mitigation for all applicable Federal, State, County, and local laws, permits and mandates, is the responsibility of the Landowner, Engineer, and Contractors working on this project. The approval of this plan set shall not be construed as proof of compliance with applicable laws and permit requirements. The approval of this plan set will expire one-year from the date City staff signed this plan set.

Signed: *[Signature]* 07/30/2025
 Alan Danforth, Engineering Manager

- NOTES:
1. AVOID PLACING LANE CLOSURE TAPERS WITHIN OR IMMEDIATELY FOLLOWING HORIZONTAL & VERTICAL CURVES BY ADJUSTING LONGITUDINAL BUFFER SPACE.
 2. IF LONGITUDINAL BUFFER SPACE IS REDUCED FROM DISTANCES LISTED IN TABLE, UPGRADE PROTECTIVE VEHICLE TO A TRANSPORTABLE ATTENUATOR.
 3. 36" TRAFFIC CONES, 42" TALL CHANNELIZATION DEVICES, OR TRAFFIC SAFETY DRUMS OK.
 4. BICYCLISTS MAY BE COMBINED WITH ALTERNATING VEHICULAR TRAFFIC. BIKES TO CLEAR PRIOR TO FLAGGERS RELEASING ONCOMING TRAFFIC.
 5. ACCOMMODATE PEDESTRIANS VIA SHUTTLE THROUGH LANE CLOSURE, USING THE PAVED SHOULDER OPPOSITE THE WORK AREA, OR ANOTHER METHOD THE ENGINEER ACCEPTS.
 6. SEE STANDARD SPECIFICATIONS FOR ADDITIONAL REQUIREMENTS:
 1-07.8(1) HIGH-VISIBILITY APPAREL
 1-10.3(1)A FLAGGERS AND NIGHTTIME ILLUMINATION
 1-10.3(2)A TRAFFIC CONTROL PROCEDURES
 9-35.1 24-INCH STOP/SLOW PADDLE SIZE
 7. FOR PROJECT-SPECIFIC REQUIREMENTS, SEE SPECIAL PROVISIONS.
 8. SIGNS ARE BLACK ON ORANGE UNLESS OTHERWISE INDICATED.
 9. ACTUAL CENTERLINE PAVEMENT MARKINGS MAY VARY.
 10. PARCEL, CL AND ROW LINES ARE APPROXIMATE.

LEGEND:

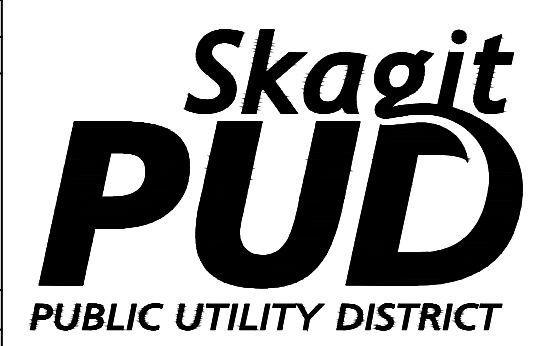
- ◀ TEMPORARY SIGN LOCATION
- 28" REFLECTIVE TRAFFIC CONE (SEE NOTE 3)
- 🚚 PROTECTIVE VEHICLE
- 🚧 FLAGGER



ISSUE	REVISIONS	BY	DATE
1.	TRAFFIC CONTROL PLAN	JLB	6/6/24



DATUM: HOR: NAD 83 VERT: NAVD 88	DSGN BY: JLB DWN BY: JLB APPVD BY: MCH
DATE PRINTED: 6/6/24	SEC: 29 TWP: 34 N RGE: 4 E



PUBLIC UTILITY DISTRICT
 NO. 1 of SKAGIT COUNTY
 1415 Freeway Drive
 P.O. BOX 1436
 Mount Vernon, WA 98273
 (360) 424-7104
 www.SkagitPud.org

PIPELINE RELOCATION
 AT HENSON ROAD
 TRAFFIC CONTROL
 ONE LANE CLOSURE

SCALE: NTS JOB ID : CP14018 SHEET: 2 OF 2